



City of Langford

*[www.cityoflangford.ca](http://www.cityoflangford.ca)*

# Langford Transportation Highlights 2016-2018



## **Capital Projects:**

McCallum Road Connector

Leigh Road Interchange Southbound Off-Ramp

Leigh Road at Goldstream Avenue Intersection Reconfiguration

Leigh Road Extension to Langford Parkway

West Shore Parkway Completion Project

Latoria and Happy Valley Road Improvements



# Capital Projects:

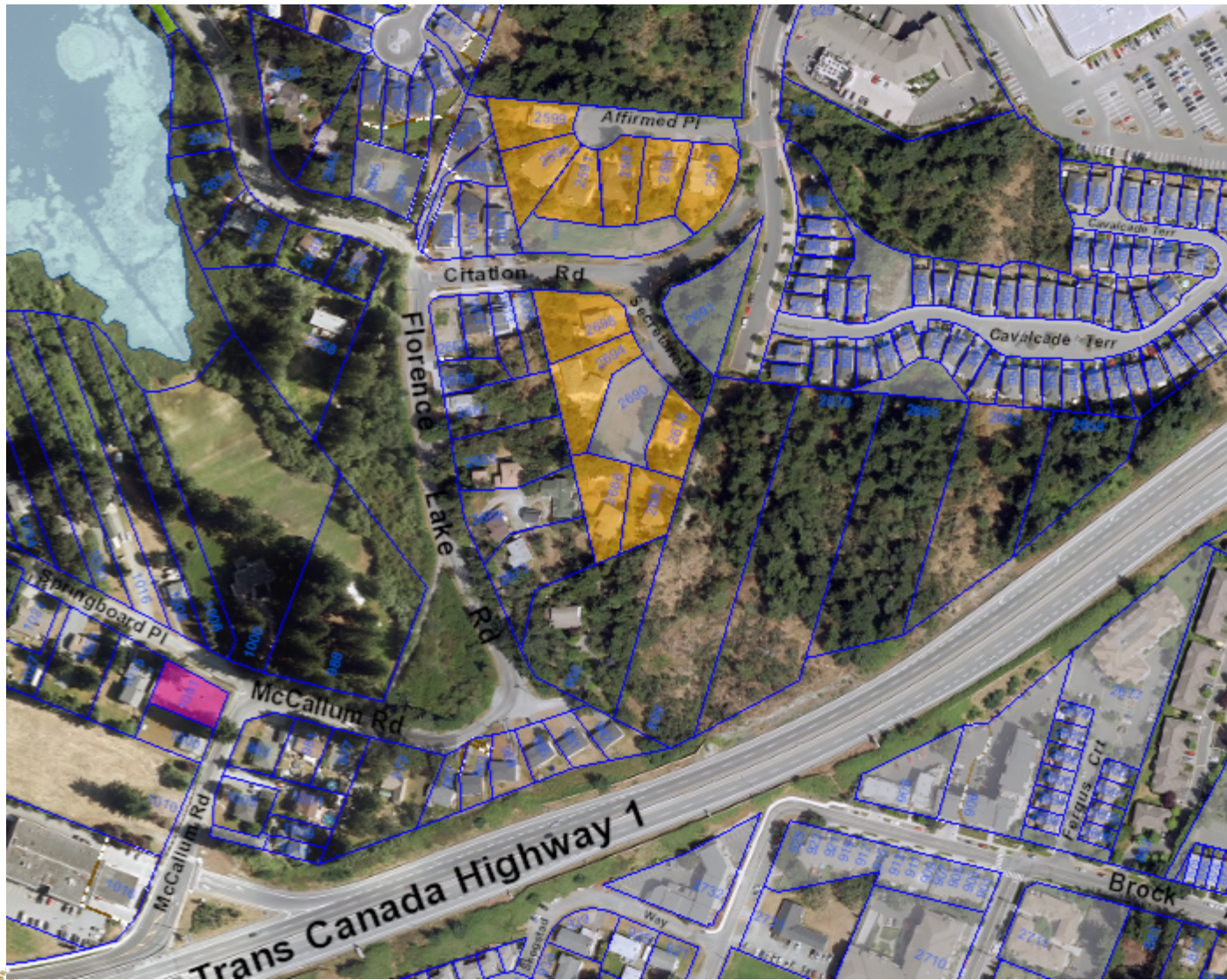
## McCallum Road Connector

### Description:

- Completion of missing section of McCallum Road
- Includes:
  - Completing road connection west from Cavalcade Terrace to Florence Lake Road; and
  - Improvements on existing McCallum Road from Florence Lake Road to Springboard Place
  - 2 driving lanes (one in each direction); middle turnlane as necessary
  - Sidewalks on east side of road to match existing in new section of McCallum
  - Bikelanes both directions







# Capital Projects:

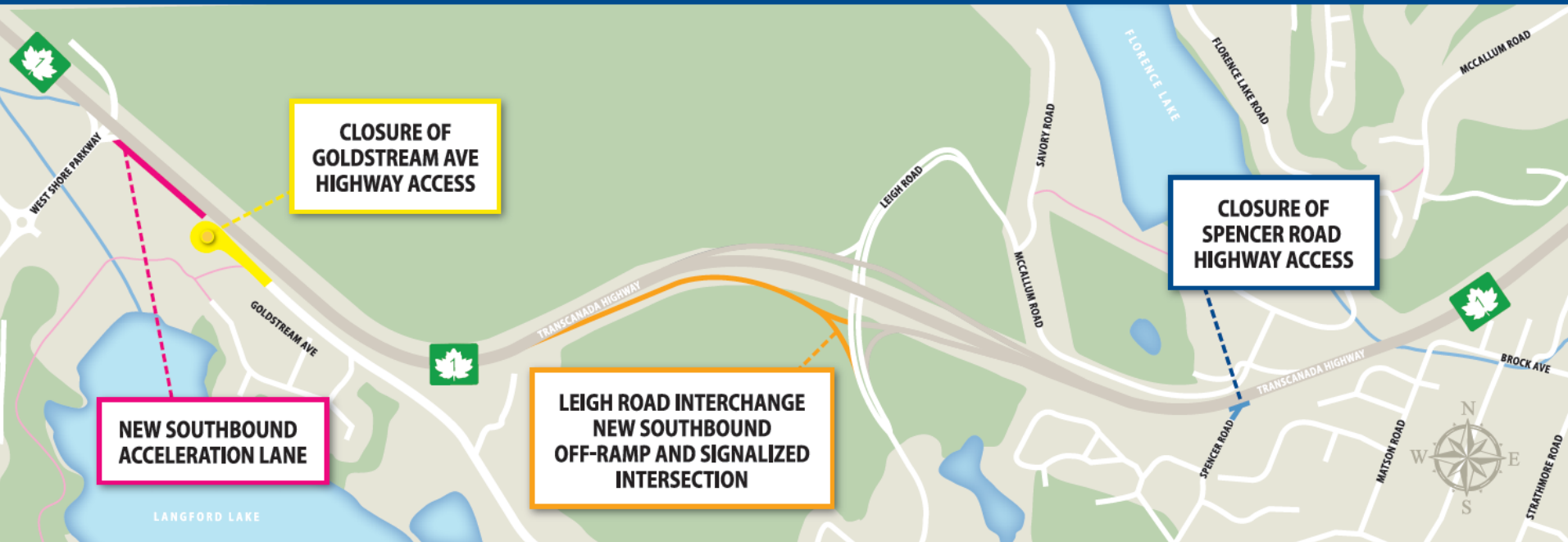
## Leigh Road Interchange Southbound Off-Ramp

### Description:

- Leigh Road Interchange (LRI) opened 3 ramps in June 2013
- Final Phase Includes:
  - Completion of last southbound off-ramp at Leigh Road Interchange (opened December 2015)
  - Closure of Goldstream at TCH (December 2015 – paving February 2016)
  - Closure of Spencer Road at TCH (July 2015)
  - Acceleration lane southbound onto TCH from Westshore Parkway (heading toward City of Victoria) (December 2015)



# HIGHWAY 1 ACCESS IMPROVEMENTS IN LANGFORD



BC JOBS  
PLAN



**B.C. on the Move**



City of Langford  
[www.cityoflangford.ca](http://www.cityoflangford.ca)





# Capital Projects:

## Leigh Road @ Goldstream Avenue Intersection Improvements

### Description:

- Improvements to the intersection of Goldstream Avenue at Leigh Road
- Includes:
  - Improvements to intersection alignment
  - Installation of traffic signals
  - Some utilities require relocation
  - Construction February through August 2016



# Capital Projects:

## Leigh Road Capital Improvements

### Description:

- Improvements to Leigh Road between Goldstream Avenue and Dunford Avenue (completed in 2015)
- Improvements Dunford south to Henry Eng Place (2016)
- Includes:
  - Improve pavement structure in two driving lanes
  - Create middle turnlane for duration of area
  - Paved multi use path on east side of Leigh Road
  - Bikelanes both sides
  - Connection to Henry Eng Place allows transit and truck traffic to avoid Dunford Avenue and link directly to Leigh Road



# Capital Projects:

## Leigh Road Capital Improvements



# Grant Application:

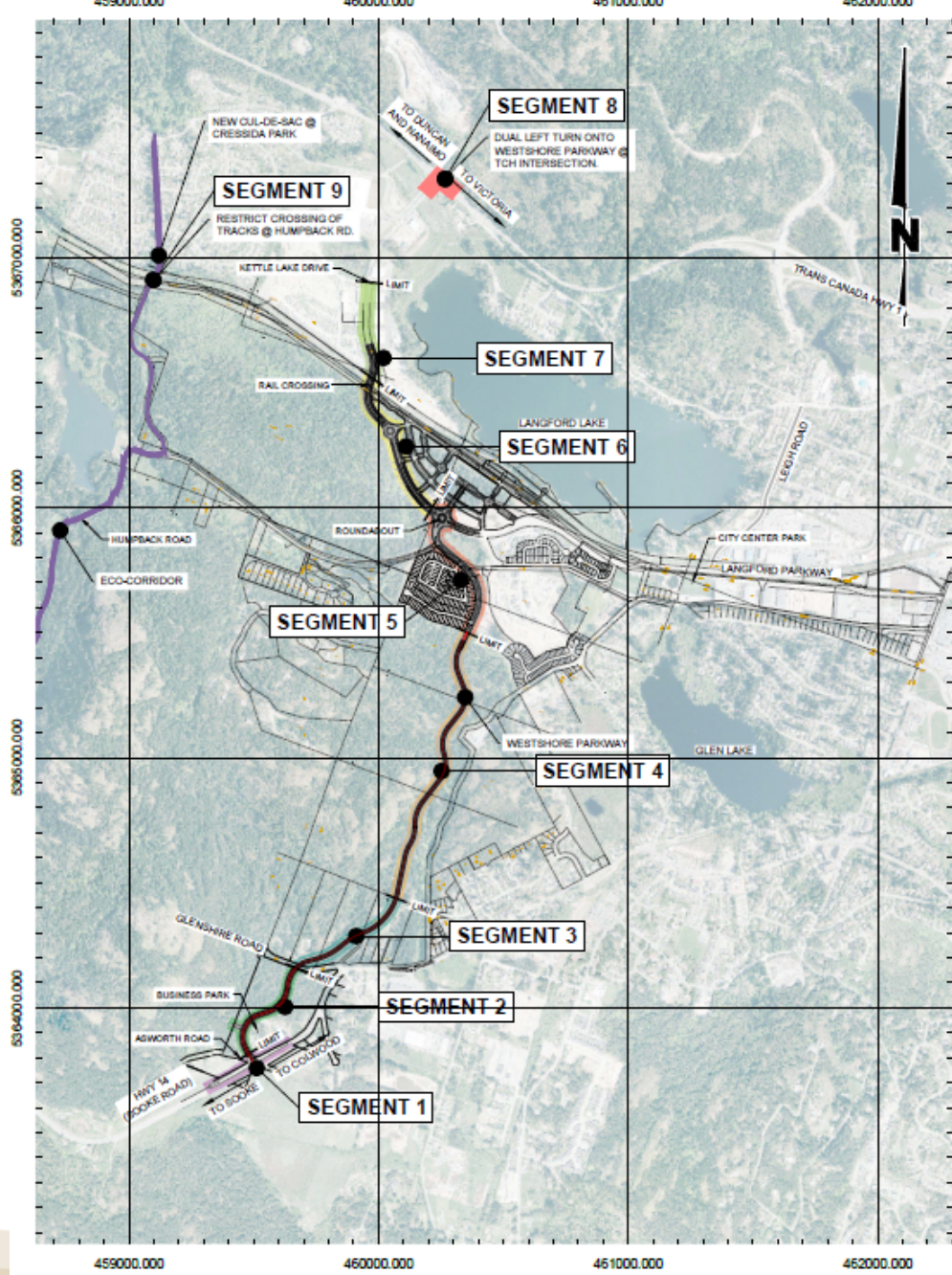
## New Building Canada Fund – Westshore Parkway Completion

### Description:

- Completion of remaining 3.5km of Westshore Parkway including improvements on the TCH at Westshore Parkway south across the railway tracks to Highway #14 (Sooke Road)
- Construction December 2015 to Spring 2018
- Includes:
  - Two driving lanes; middle turn lane as necessary
  - Bikelanes both directions
  - Bus transit stops
  - Streetlights
  - boulevards











Future Dual Left Turn  
Onto West Shore Pkwy  
Southbound

Potential Future  
West Shore Pkwy  
Interchange

Southbound  
Acceleration Lane

Close Goldstream Ave  
Exit when Off Ramp  
at Leigh Rd  
Interchange Opened

Future Level Rail  
Crossing & Connection  
to Langford Pkwy

West Shore Pkwy  
Completion Project  
"Summer 2015- Spring 2018"

Future Inlet Rd  
Connection to  
West Shore Pkwy "2017"

West Shore Pkwy  
Segment 4 & 5  
to be Completed

Trans Canada Hwy

Southbound Off-Ramp  
Closing November 28, 2015



Future  
Traffic Signal

Leigh Rd  
Improvements 2018

Future Level Rail  
Crossing & Connection  
to Langford Pkwy

Langford Pkwy

Florence Lake

Langford Lake

Map labels include: Sooke Lake Rd, Amy Rd, Southbound Acceleration Lane, Goldstream Ave, Trans Canada Hwy, Leigh Rd, Langford Pkwy, West Shore Pkwy, Inlet Rd, Creek Side Trail, Riverside Dr, Langford Lake Rd, Golden Lake Rd, McCallum Rd, Spencer Rd, Goldstream Ave, Curtis Ave, Oak Street, Langford Pkwy, West Lake Rd, and Riverside Dr.